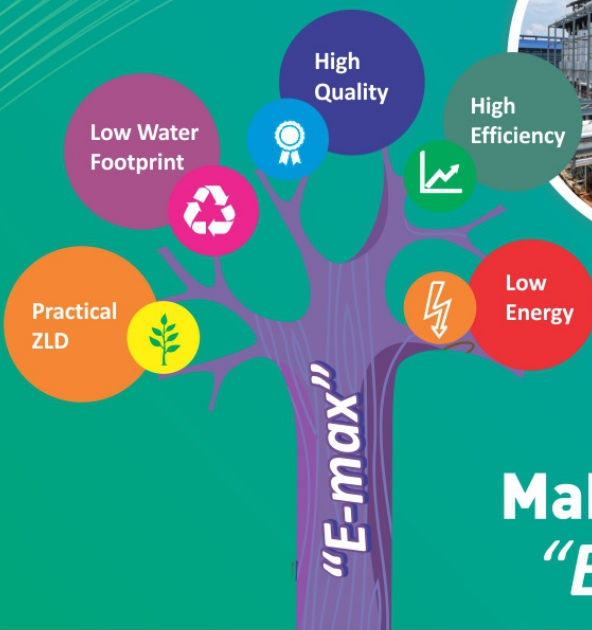


72⁺ Esteemed Clients



- 24** Grain Distilleries
- 38** Molasses Distilleries
- 36** ENA Plant
- 36** Evaporation Plant
- 30** DDGS Dryers
- 40** Fuel Ethanol Plants
- 18** Other Projects

Innovative Technological Solutions,
Global Partnership...



Make Millions with "E-max" Technology

Key Highlights of "E-max" Installations

- 🔧 India's Largest Grain Distillery – 450 KL
- 🔧 India's Largest Molasses Distillery – 800 KL
- 🔧 India's Largest Ethanol Dehydration Plant- 275 KL
- 🔧 India's Lowest Steam Grain distillery (+Dryer) at 3.75 kg/litre
- 🔧 India's Lowest Steam Molasses distillery (+Evaporation) at 2.75 kg/litre
- 🔧 India's only DDGS Dryer Vapor Integrated MEE Evaporator (DVI).
- 🔧 India's Only Direct PRC Vapor Driven MSDH Ethanol Plant
- 🔧 India's Single Largest DDGS Dryer- 1600 m2
- 🔧 India's Largest spent wash Evaporator with 1500 m2 HTA.
- 🔧 EPC projects with Distillery/ethanol set up along with Boiler,
- 🔧 TG, CPU, utilities and water treatment plants etc.

**DISTILLERY
& ETHANOL**
ZERO
LIQUID DISCHARGE
SUGAR
COGENERATION
WASTE
HEAT
RECOVERY
WATER
& WASTE WATER
BIOMASS
POWER
RENEWABLE
ENERGY

REGREEN EXCEL EPC INDIA PVT. LTD.

"Excel House" Ashirwad, Near Balewadi Stadium,
Survey No 22/10B/1/22/10A5 Behind Baner Road D-Mart,
51, Laxman Nagar, Balewadi, Pune - 411045 Maharashtra (INDIA)

Works: Gat no. 448/14, At village Nighoje,
Chakan Industrial Area, Chakan, Taluka - Khed,
Dist - Pune 410501, Maharashtra (INDIA)

