



Sugar Handling at Jaigarh Port

Sugar & Ethanol India Conference 2023

January 7-8, 2023

JSW Group is a well know Global Conglomerate



JSW Group
<div><div></div>JSW Steel: 28.5 MTPA</div> <div><div></div>JSW Energy: 4.8 GW</div> <div><div></div>JSW Infrastructure: 154 MTPA</div> <div><div></div>JSW Cement: 15 MTPA</div> <div><div></div>JSW Paints: 1,30,000 KL</div>



JSW Group - Long Term
<div><div></div>JSW Steel: 38.5 MTPA</div> <div><div></div>JSW Energy: 20 GW</div> <div><div></div>JSW Infrastructure: 300 MTPA</div> <div><div></div>JSW Cement: 25 MTPA</div> <div><div></div>JSW Paints: 10,00,000 KL</div>



India's first privately-funded High Performance Training Centre for aspiring athletes of the country

- Spread over 42 acres in Vijayanagar, Karnataka
- Trains talented young athletes across five Olympic disciplines - wrestling, boxing, judo, athletics and swimming

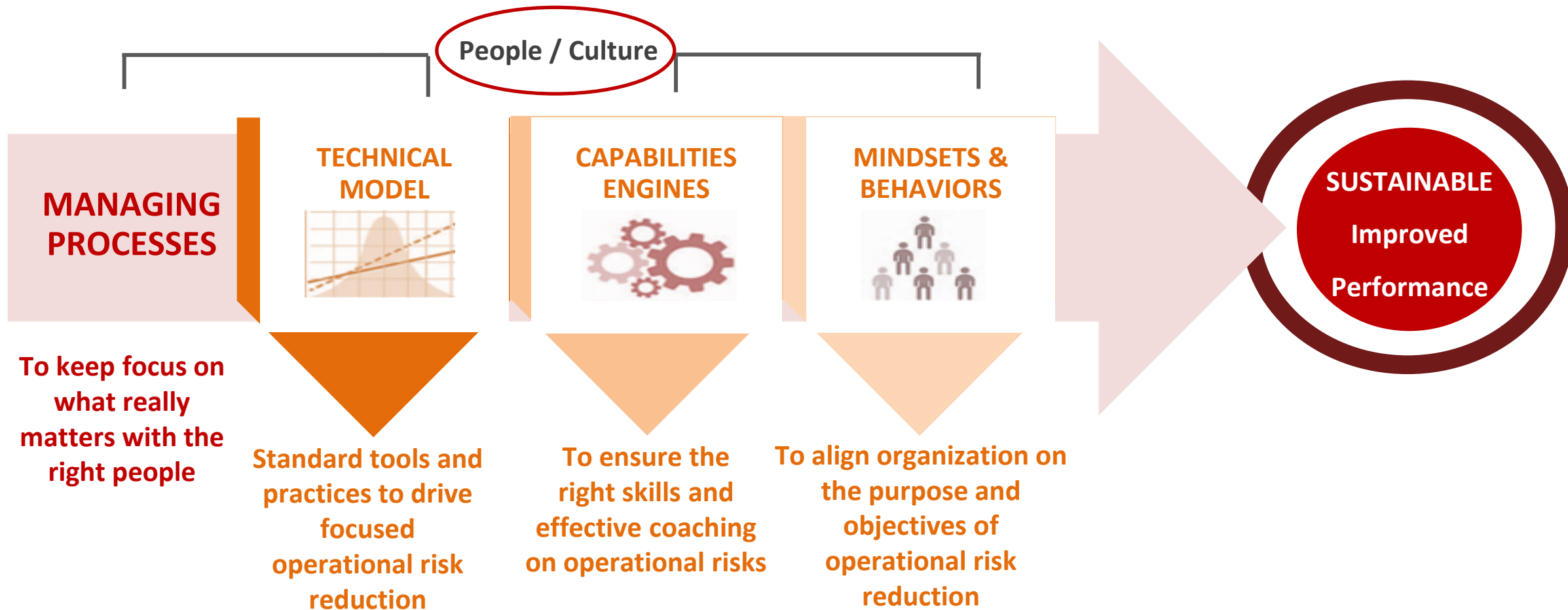
- **1 Olympic Medal**
- **3 World Championships**
- **5 medals at Asian Games**
- **17 medals at Commonwealth Games**



Safety First – JSW Group Engaged DuPont to Implement Global Safety Standards at all Locations

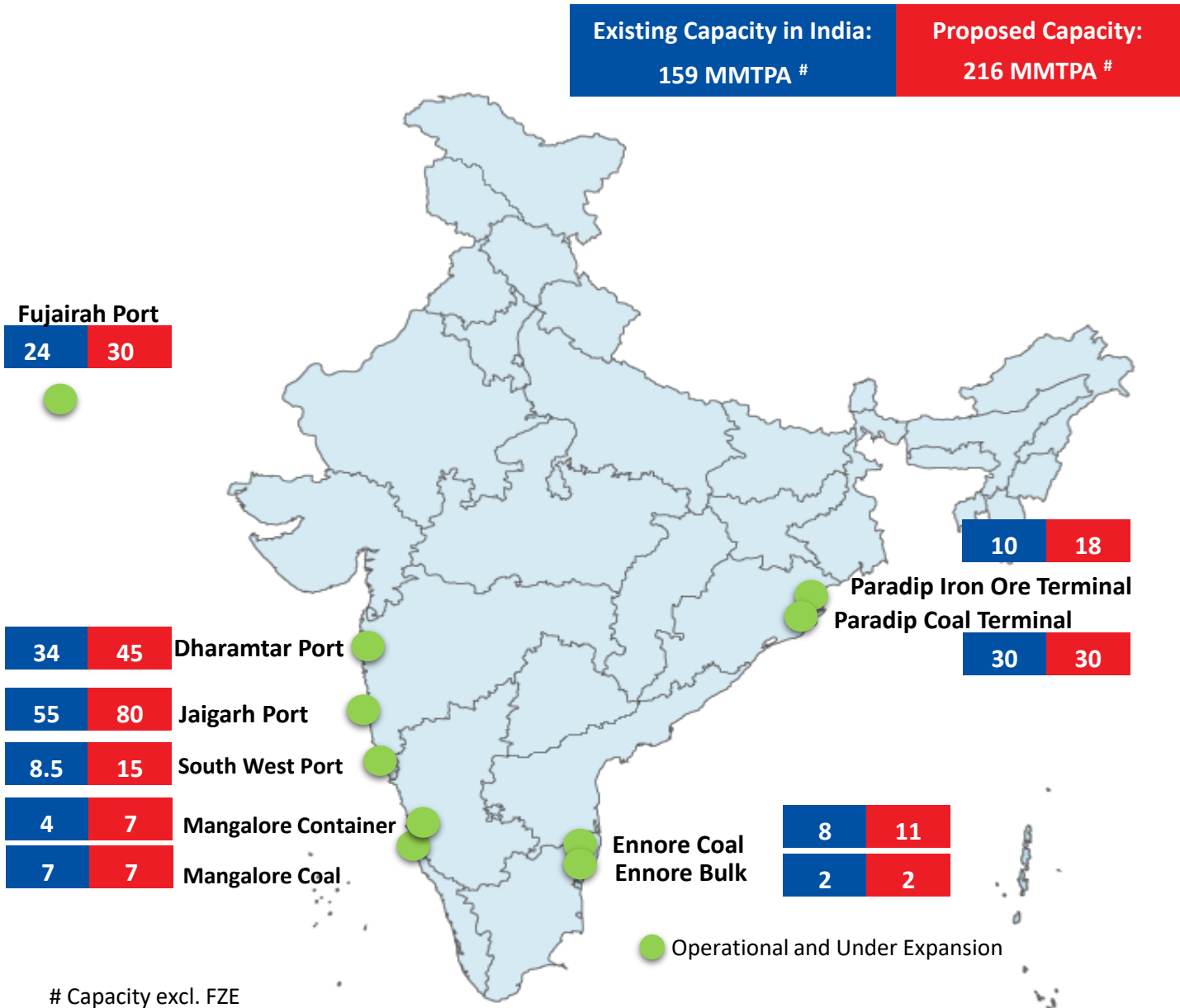


Safety Integrated Methodology



Safety at workplace is given utmost importance to make our processes safe and people secure and efficient

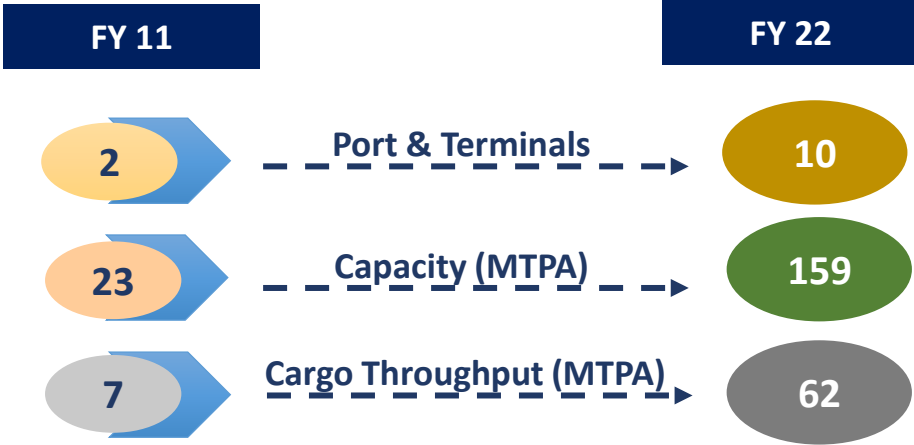
JSW Infrastructure's Steep Growth Trajectory



Highlights

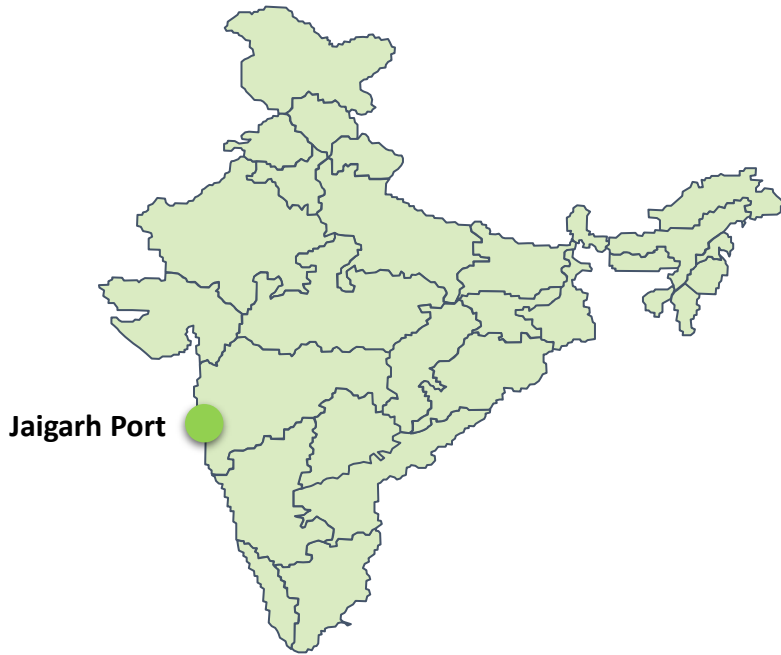
- India's first FSRU based LNG terminal.
- India's largest riverine port at Dharamtar
- 25% contribution towards India's Inland Waterways transportation
- Single largest coal export facility in India at Paradip

Evolution of JSW Infrastructure



Capacity & Cargo
excl. FZE

Jaigarh Port – One of the deepest port in the West Coast of India



Overview

- Jaigarh Port is an all weather Port
- Located strategically between two major ports (Mumbai - 365kms & Goa - 250kms)
- Jaigarh Port is the preferred port for its primary hinterland comprising South Maharashtra, North Karnataka, North West Andhra Pradesh and Telangana
- Highest sugar exporter amongst the private ports in India.



Present Capacity

55 MMTPA

Number of Berths

7 berths

Draft Available

18.5 meters

Expansion by 2021

80 MMTPA

55 MTPA capacity with LNG, LPG, Bulk terminals

Berth	Length	Max. Vessel Size (DWT)	Type
Existing Berths			
1	300	1,80,000	Bulk Cargo
2	300	1,80,000	Bulk and Break Bulk Cargo
3A	306	2,00,000	Bulk Cargo
3B	306	1,20,000	Multipurpose
4A	312	VLGC Vessel	LPG
6A	343	55,000	Multipurpose
LNG	406	Qflex	LNG



Key Terminals

LNG Terminal



- **Capacity : 4 MTPA**
- India's FSRU based LNG Terminal
- Connected with National Grid at Dabhol

New Berths



- **Capacity : 6 MTPA**
- Berths 6B and 6C under construction
- LPG, Liquid and Chemical cargo

Liquid Terminal



- **Capacity: 2 MTPA**
- Serving central Maharashtra and Northern Karnataka.
- Cargo: POL, Edible Oil, Molasses, Chemicals

Road Evacuation



Jaigarh Nivali Road Project

- Sagar Mala initiate by Central Government
- Conversion to four lane of SH 106 (Jaigarh – Nivali Highway) is under planning by NHA

New Roads

- Chiplun- Modka Agar – Jaigarh Port
- The project has been considered in the Bharat mala project

Rail Evacuation



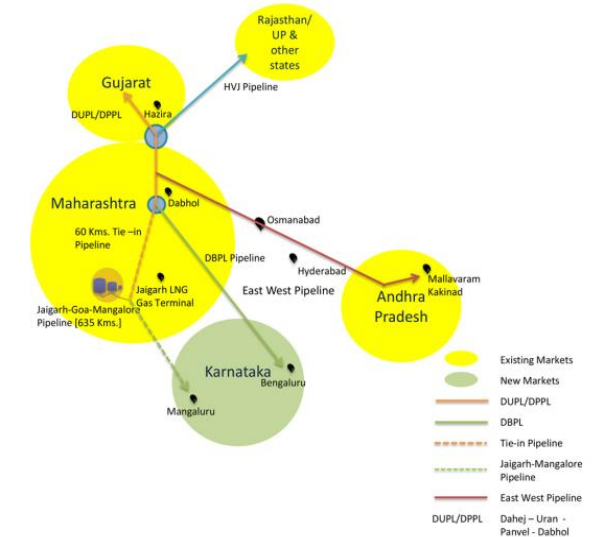
Upcoming Railway Siding

- Bhoke Railway siding 42 km from port.
- Kolhapur - Vaibhavadi project

Upcoming Railway Lines

- Two Railway lines under planning
- Jaigarh-KRCL—Vaibhavadi-Kolhapur project
- Jaigarh-KRCL- Chiplun-Karad.

Pipeline Evacuation



Natural Gas Pipelines

- Jaigarh is connected to Dabhol (65 km) and Mangalore (635 km) via Natural Gas Pipeline

LPG Pipelines

- LPG pipeline will be planned in future as per the requirement

Coal and Iron Ore Terminal



Mechanical vessel loading

- Ship-unloader-05 nos

Stacker Reclaimer

- 7 Nos. Stacking Reclaimers
- 2 Nos. Reclaimers

Open Storage

- Storage Capacity : 13,00,000 MT

Agri & Fertiliser Terminal



Mobile Harbor Cranes

- Liebherr Cranes – 4 nos of Capacity 100 MT each

Other Infrastructure

- 2 Hoppers of 100 MT each
- Warehouses: 13 nos.
- Total area : ~260000 MT
- Automatic Mobile Bagging Unit

Liquid Terminal



Liquid Tank Farm

- Existing Capacity of 56000 MT for handling Molasses & Edible Oil

Proposed Liquid Tank Farm

- Additional Capacity of 50,000 MT
- POL : HSD, SKO, MS
- Bitumen
- Chemical: Ethanol, Methanol, Ethyl Acetate, Acetic Acid

Tank Farm- Molasses Export



- Total capacity – 56,000 MT
- Total tanks - 08 nos.
- 4 nos. tanks of 5,000 MT each
- 2 nos. tanks of 10,000 MT each
- 2 nos. tanks of 8000 MT each
- 1.3 km piping – Shore to loading bay
- Separate weighbridge of 100 MT
- Currently used for molasses storage
- Feed to vessel by gravity as well as by pumps as backup

Jaigarh LPG Terminal



Capacity Phase 1 : 0.60 MMTPA (Operational)

- Phase 1 LPG Terminal operational since April 2022
- Handling over 20,000-30,000 MT per month

Capacity Phase 2 : 2.00 MMTPA (under construction)

- The terminal is under construction and is expected to be commissioned by Q2 2024

Liquid Terminal



Liquid Terminal (Under Construction)

- Liquid terminal for Chemicals, HSD, MS, Fuel oil, Ethanol, Sulphuric Acid, Base oil, chemicals etc.
- Capacity in Phase 1 will be 2.00 MMTPA
- Hinterland: Maharashtra, North Karnataka, AP, Telangana
- The terminal is expected to be operational by 2023

Jaigarh Container Terminal (upcoming)



Capacity Phase 1 : 0.10 Mn TEUs (Under Construction)

- Capacity: 0.10 Mn TEUs
- Deep draft berth
- Serves central Maharashtra and Northern Karnataka
- Electronic Data Interface (EDI) & Customs Availability at Port
- To be Operational by 2023

Features

- 24/7 operations
- Electronic Data Interface (EDI) & Customs Availability at Port
- Deep draft berth
- Storage and Container Yard
- Covered warehouse

Sugar Handling at JSW Jaigarh Port

1.5 MMTPA of sugar cargo handled in FY 2022



a. Warehousing

- 13 warehouse with a capacity of 260,000 MT



b. Weighbridges

- 11 Nos of Weighbridges
- Dedicated weighbridge for sugar



c. Truck Parking

- 1000 truck parking slot
- Paved area of 10 acres

d. Sound operating Principles of Operator

- Usage of technology in Operations
- RFID enabled truck entry leading to faster turn around of trucks



Jaigarh Port handled emerged as the largest non major port in India to handle sugar cargo last season

Cargo handled	: 15.20 Lakh MT
Vessels handled	: 39 nos.
Average load rate (bulk sugar)	: 11500 MT/day
Highest load rate (bulk sugar)	: 20376 MT/day
Average trucks received per day	: 200 trucks (6000 MT/day)
Highest trucks received in a day	: 386 trucks carrying 11260 MT



Key Customers list : Baramati, Garden Court, Indian Sugar, KN Resources, Ravindra Energy, Sri Dutt, Tata Interanational, D.R Exports, Sucden India, Sakuma Exports



TATA INTERNATIONAL

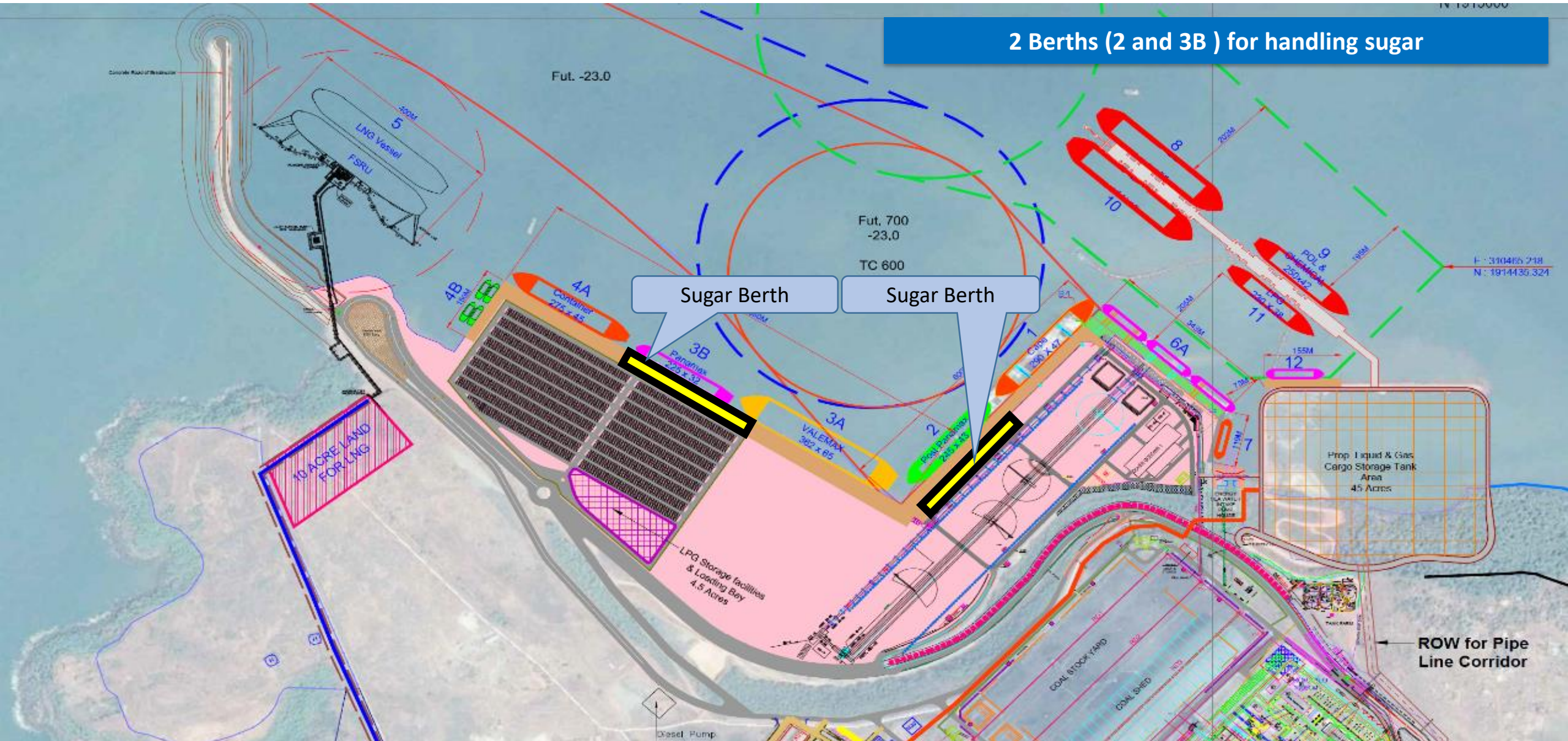


Shree Datta INDIA Pvt Ltd

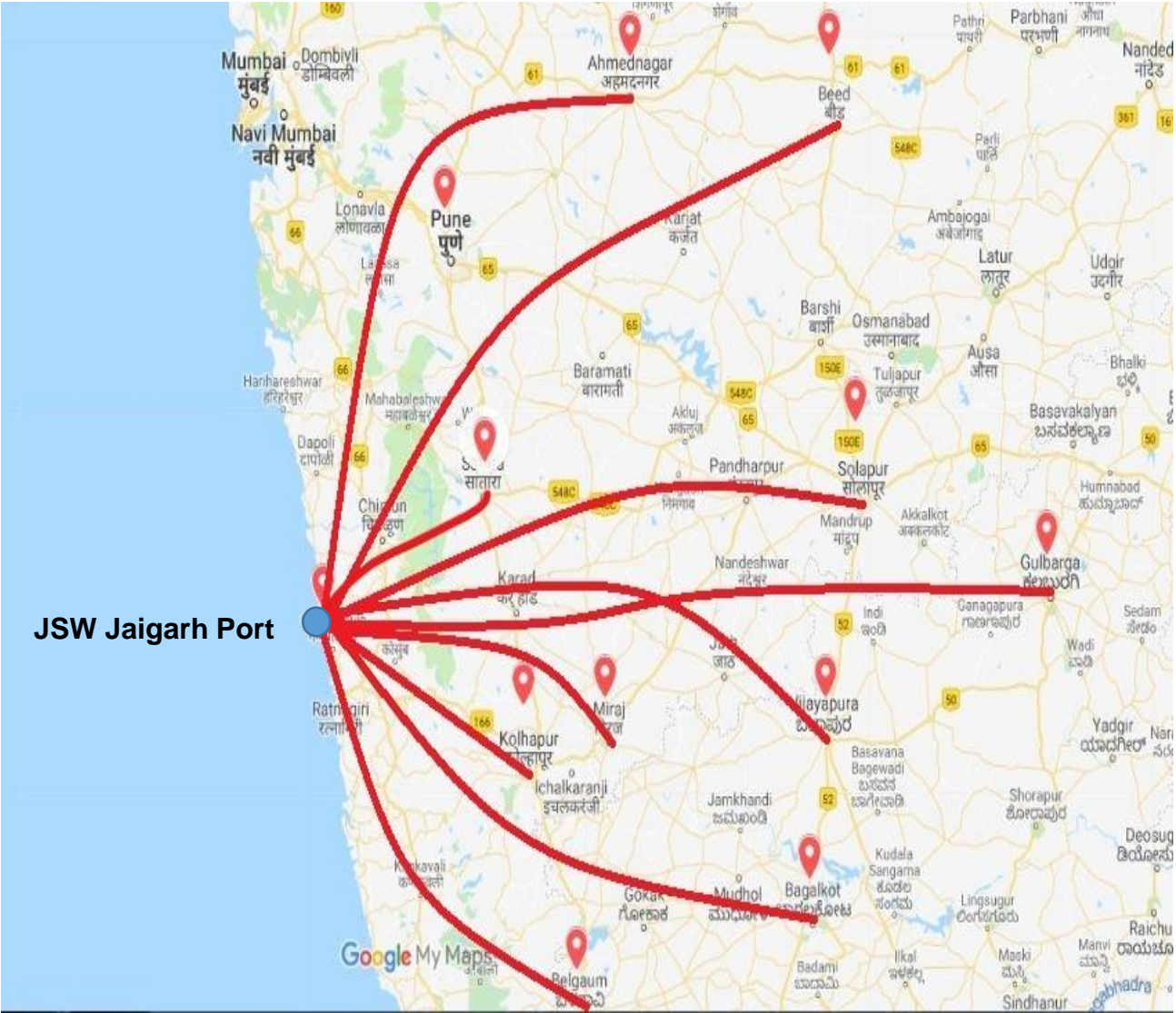
- **Berths:** 02 nos. with 17.5 mtr and 14 mtr draft resp. 4 nos, 100 T capacity shore cranes.
- **Draft:** All weather, 24x7 operations, Deep Draft Port with 18 meters depth, capable of handling Large Capesize Vessel establishing Economies of scale
- **No Demurrage:** Least waiting time with no pre berthing delay & Fast turnaround time
- **Storage:** Adequate covered warehouses (13 nos.) with combined a capacity of ~ 260000 metric tons of Sugar commodities at any given point of time.
- **Labour:** 800 labours for carting of 12000 MT sugar per day. Labours can be increased on customer need basis
- **Dumpers :** Dedicated 45 dumpers for sugar inter-carting during vessel loading operation.
- **Large Fleet of Trucks:** Availability of large fleet of trucks from various transporters
- **Connectivity:** Strategically located between Mumbai & Goa covering huge hinterland covering the primary hinterland of Kolhapur, Sangli, Satara, Raigad, Sindhudurg etc. with good road and rail connectivity
- **Minimal cargo loss:** Jaigarh Port is handling sugar cargo at minimal handling loss

Infrastructure for handling Sugar - Berths

2 Berths (2 and 3B) for handling sugar



Hinterland



Distance to major Indian Cities			
City	Dist (km)	City	Dist (km)
Kolhapur	166	Ratnagiri	60
Sangli	214	Solapur	406
Satara	230	Raigarh	250
Pune	327	Aurangabad	559
Ahmednagar	446	Bijapur	340
Daund	383	Belgaum	279
Jalna	633	Bagalkot	365
parbhani	690	Dharwad	352

Warehouse



- Warehouses – 81200 Sq Meter (13 nos.) of closed warehouse available inside port
- Covered storage capacity of 2.60 L MT for bulk sugar

Berth



- 02 nos. with draft of 17.5 mtr and 14 mtr resp.
- 4 nos, 100 T capacity shore cranes.
- 4 no. of shore grabs available for vessel cranes

Mobile Harbour Cranes



- MHC: 04 nos.(Leibherr Cranes)
- Under hook capacity – 100 MT each
- Disch. / loading rate – 1000 TPH
- Iron Mesh/net for bulk sugar loading – 10 nos.

Equipment



- Pay loaders - 22 nos.
- Excavators - 08 nos.
- Dumpers - 45 dedicated nos.
- Other equipments - 10 nos.

Weighbridge



- Total 11 weighbridges
- 04 w/b of 100 tons
- 04 w/b of 60 tons + 02 w/b of 60 ton- LPG
- 01 w/b of 50 tons

Pre Gate



- Parking for 1000 trucks, Area – 40000 sqm
- Single window process
- Refreshment facility, truck maintenance
- All paved area

Sugar handling at Jaigarh Port



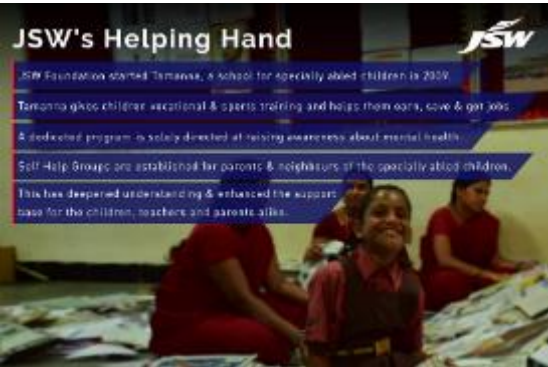
We have successfully handled the first sugar consignment this season!



Load rate of over 20000 MT/day achieved



Corporate Social Responsibility Programs





Thank You