



Bulk and Container Sugar handling at Jaigarh Port

Sugar & Ethanol India Conference 2024

February 1-2, 2024

JSW Group is a Well Known Global Conglomerate

 28.5 MTPA <i>Listed Entity</i>	 6.7 GW <i>Listed Entity</i>	 170 MTPA* <i>Listed Entity</i>	 19 MTPA	 1,60,000 KL	 +1 Million Reach	 3 Teams	 VC Firm
--	---	--	------------------------	----------------------------	---------------------------------	------------------------	------------------------

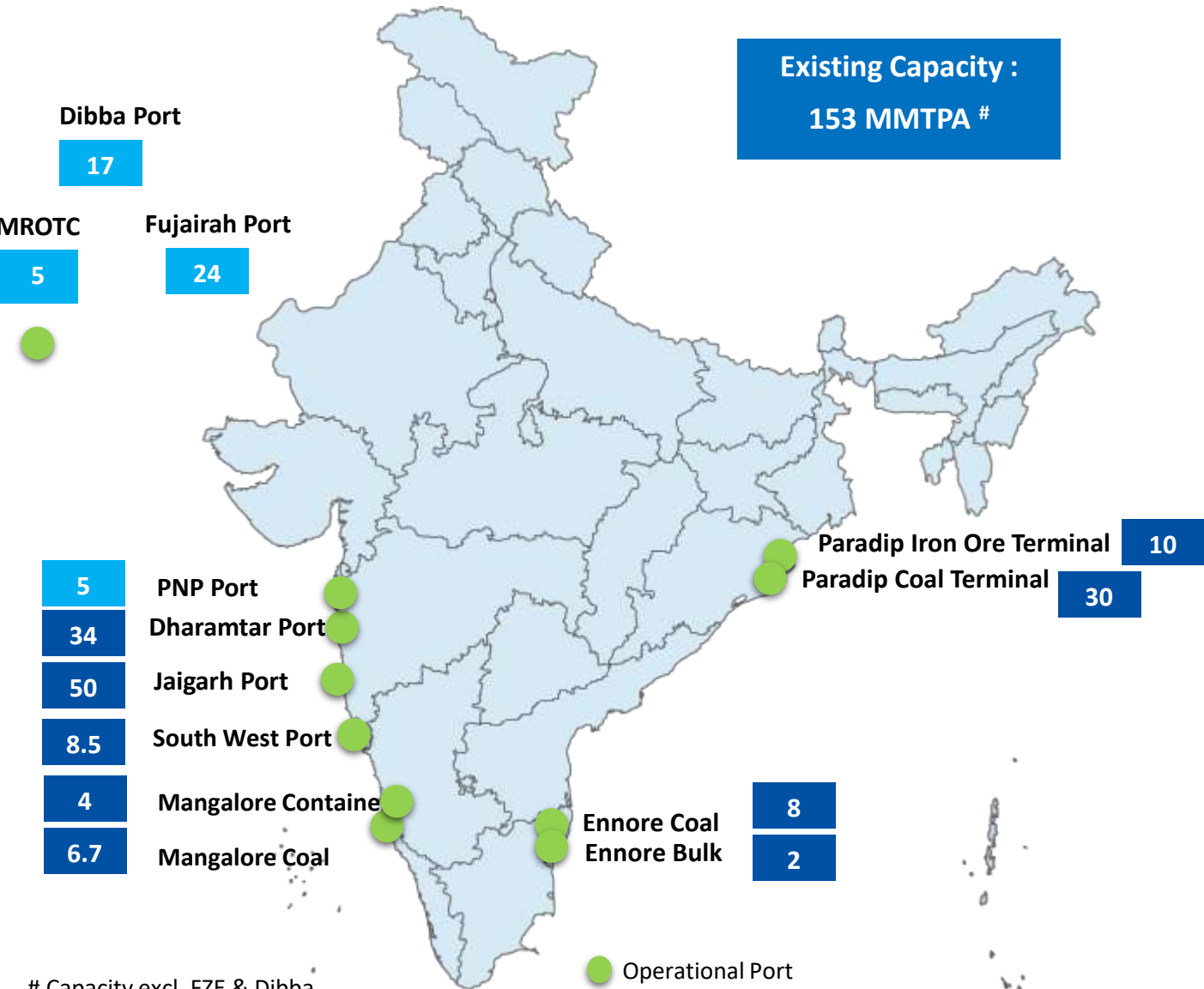
JSW Group
JSW Steel: 28.5 MTPA
JSW Energy: 6.7 GW
JSW Infrastructure: 170 MTPA
JSW Cement: 19 MTPA
JSW Paints: 1,60,000 KL



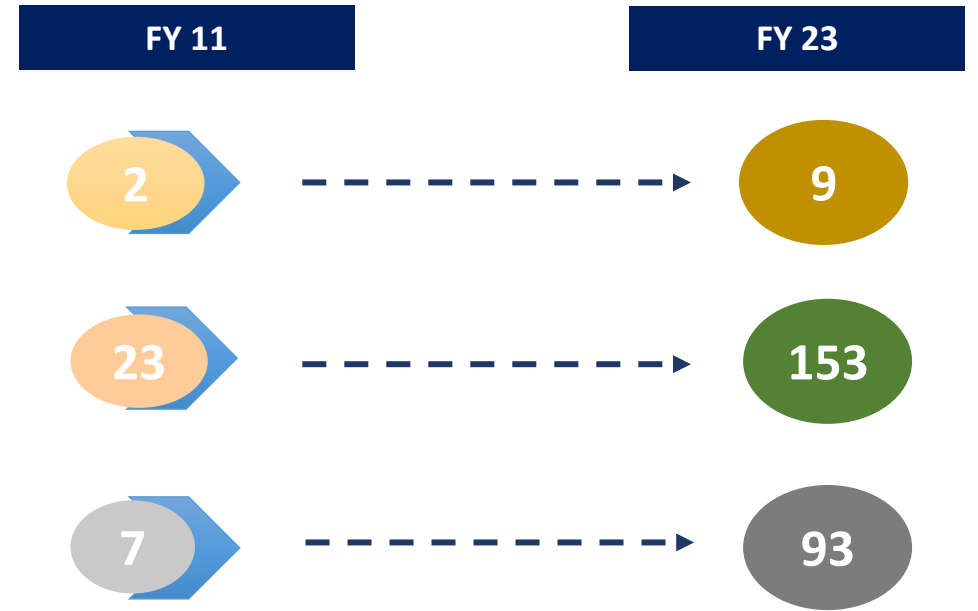
JSW Group - Long Term
JSW Steel: 38.5 MTPA
JSW Energy: 20 GW
JSW Infrastructure: 300 MTPA
JSW Cement: 25 MTPA
JSW Paints: 10,00,000 KL

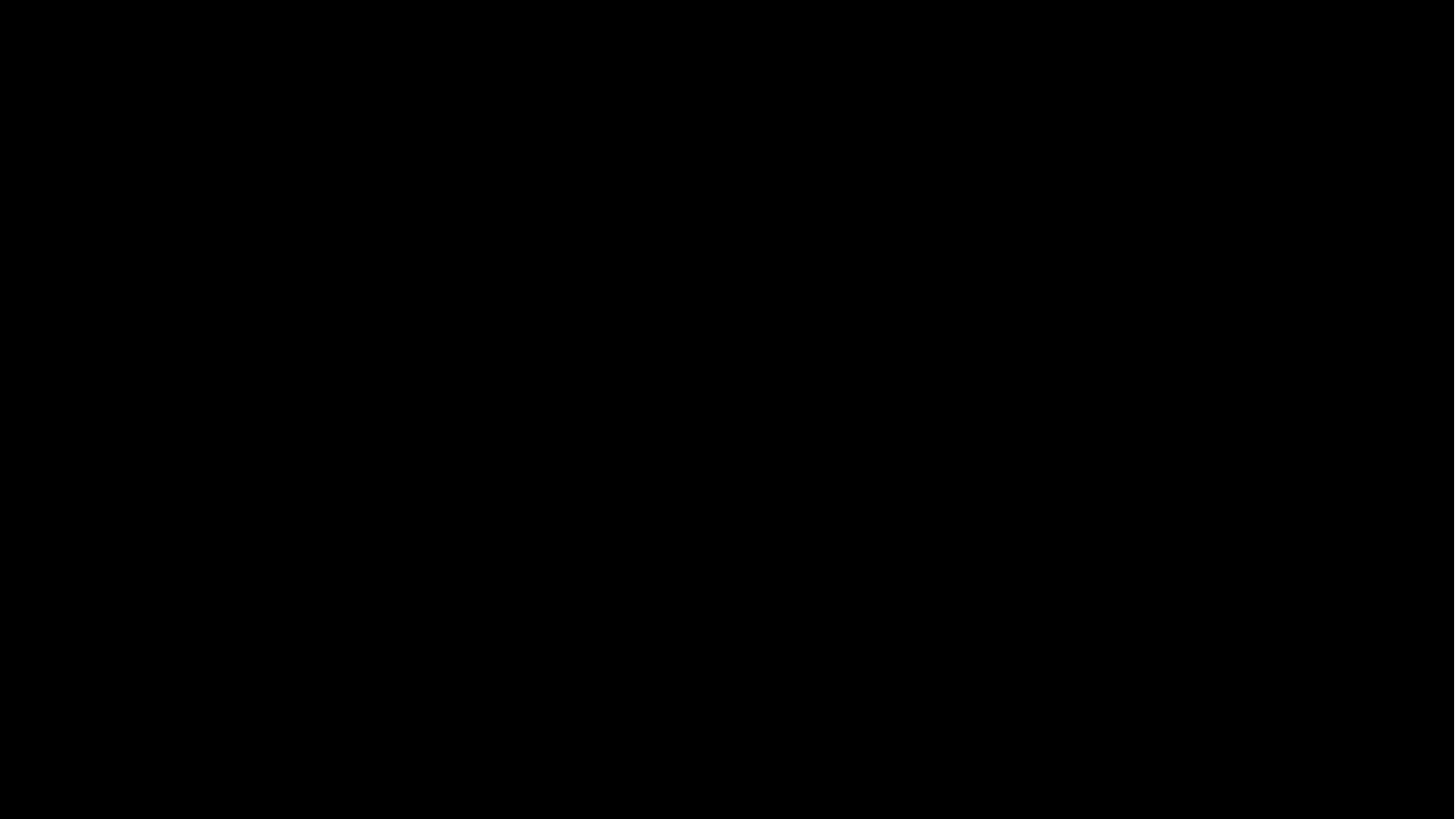
JSW Infrastructure's Existing Presence & Capacity

**Existing Capacity :
153 MMTPA #**



Evolution of JSW Infrastructure





Infrastructure for handling Sugar - Berths

2 Berths (2 and 3B) for handling sugar

Sugar Berth

Sugar Berth

Present Capacity

55 MMTPA

Number of Berths

7 berths

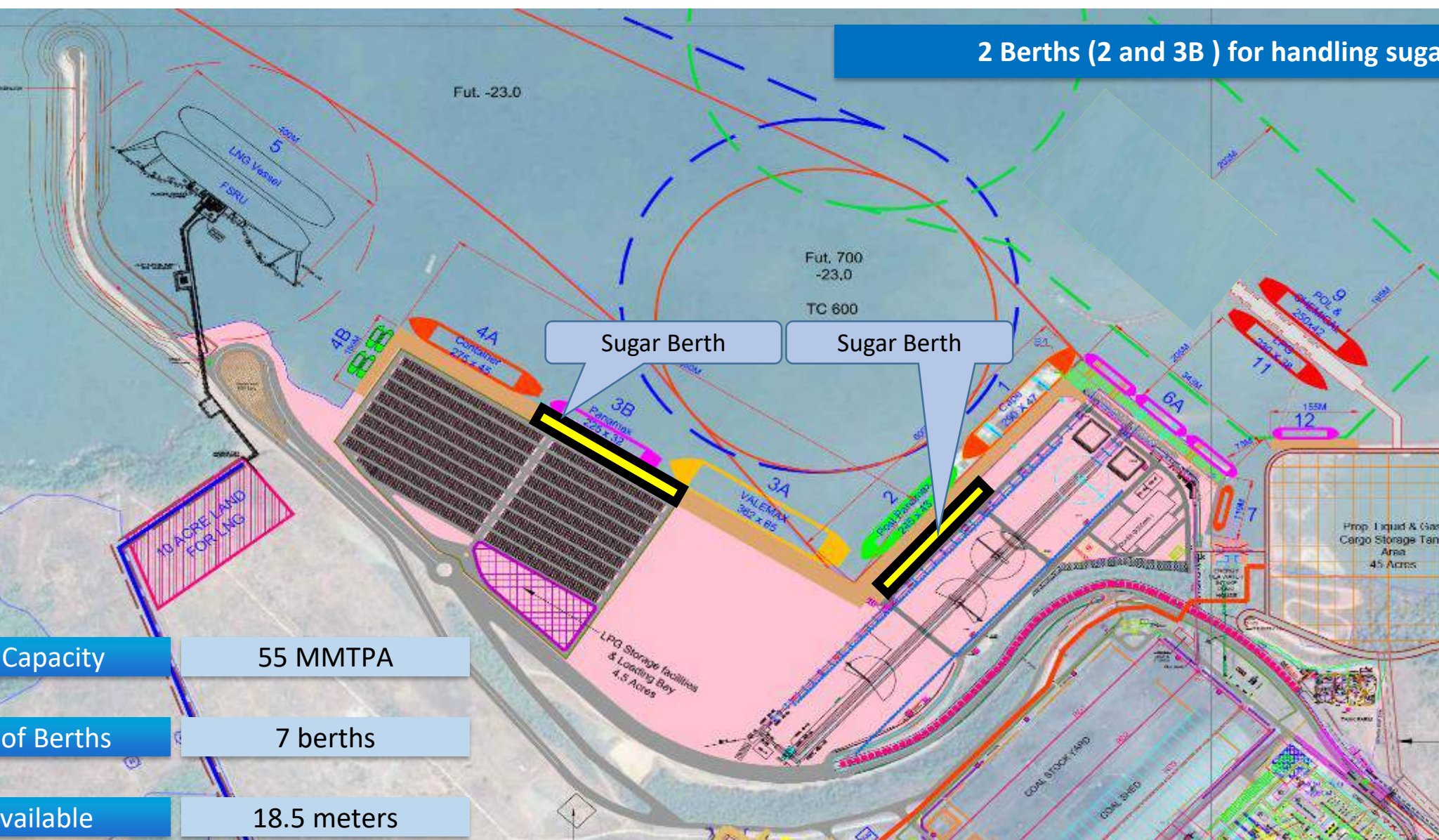
Draft Available

18.5 meters

10 ACRE LAND FOR LNG

Prop. Liquid & Gas Cargo Storage Tank Area
4.5 Acres

ROW for Pipe Line Corridor



Jaigarh Port handled emerged as the largest non major port in India to handle sugar cargo in FY 2022

Cargo handled	: 15.20 Lakh MT
Vessels handled	: 39 nos.
Average load rate (bulk sugar)	: 11500 MT/day
Highest load rate (bulk sugar)	: 20376 MT/day
Average trucks received per day	: 200 trucks (6000 MT/day)
Highest trucks received in a day	: 386 trucks carrying 11260 MT



Warehouse



- 14 nos
- 80,000 Sqm - 280,000 MT Storage

Berth



- 02 nos.
- Draft of 17.5 mtr and 14 mtr

Mobile Harbour Cranes



- 04 nos. – 100 MT each
- Disch. / loading rate – 1000 TPH

Equipment



- Pay loaders - 30 nos.
- Excavators - 22 nos.

Weighbridge



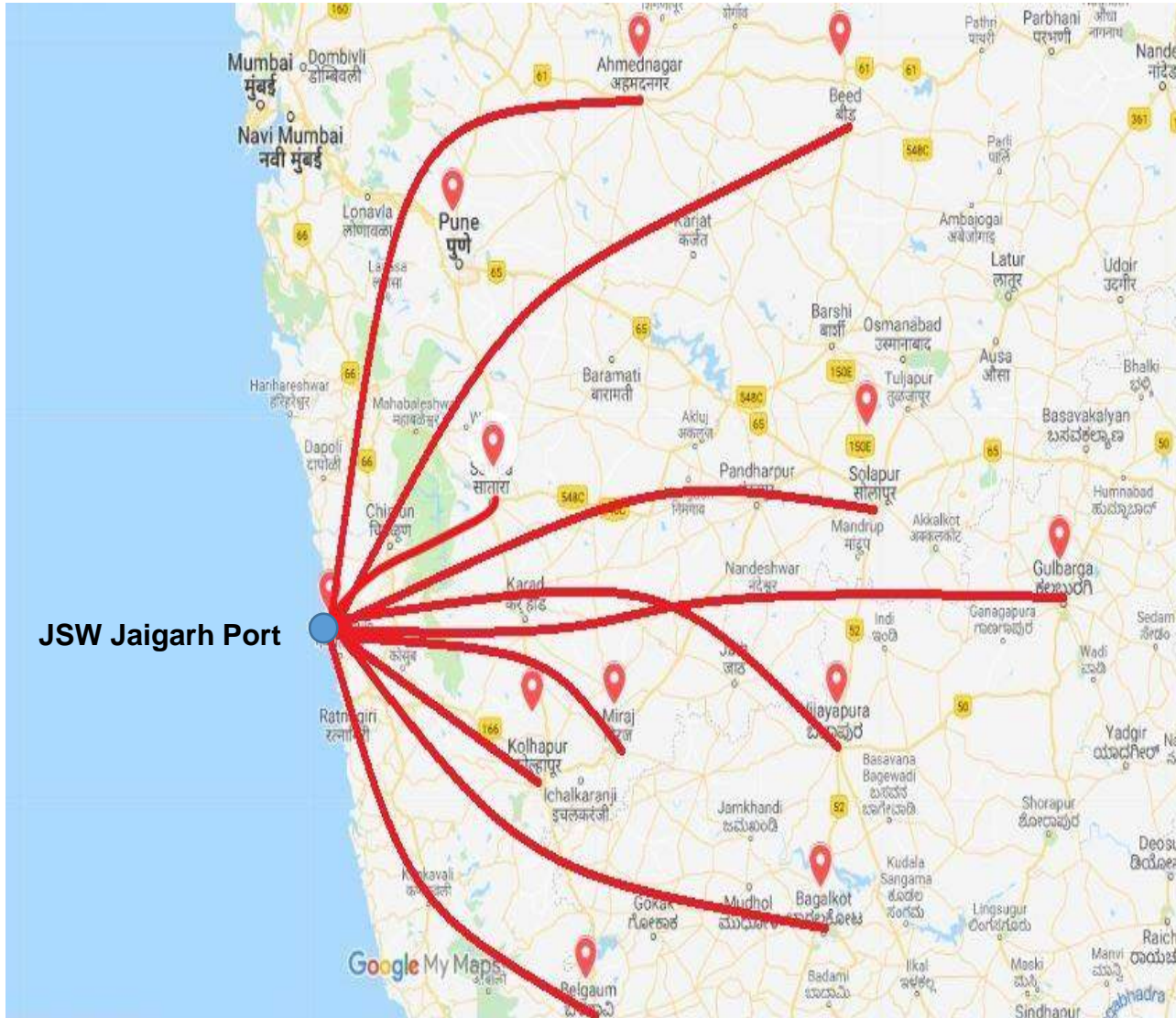
- 14 weighbridges

Truck Parking and Pre Gate



- Parking for 1000 trucks
- Single window process

Strategically located close to hinterland clusters

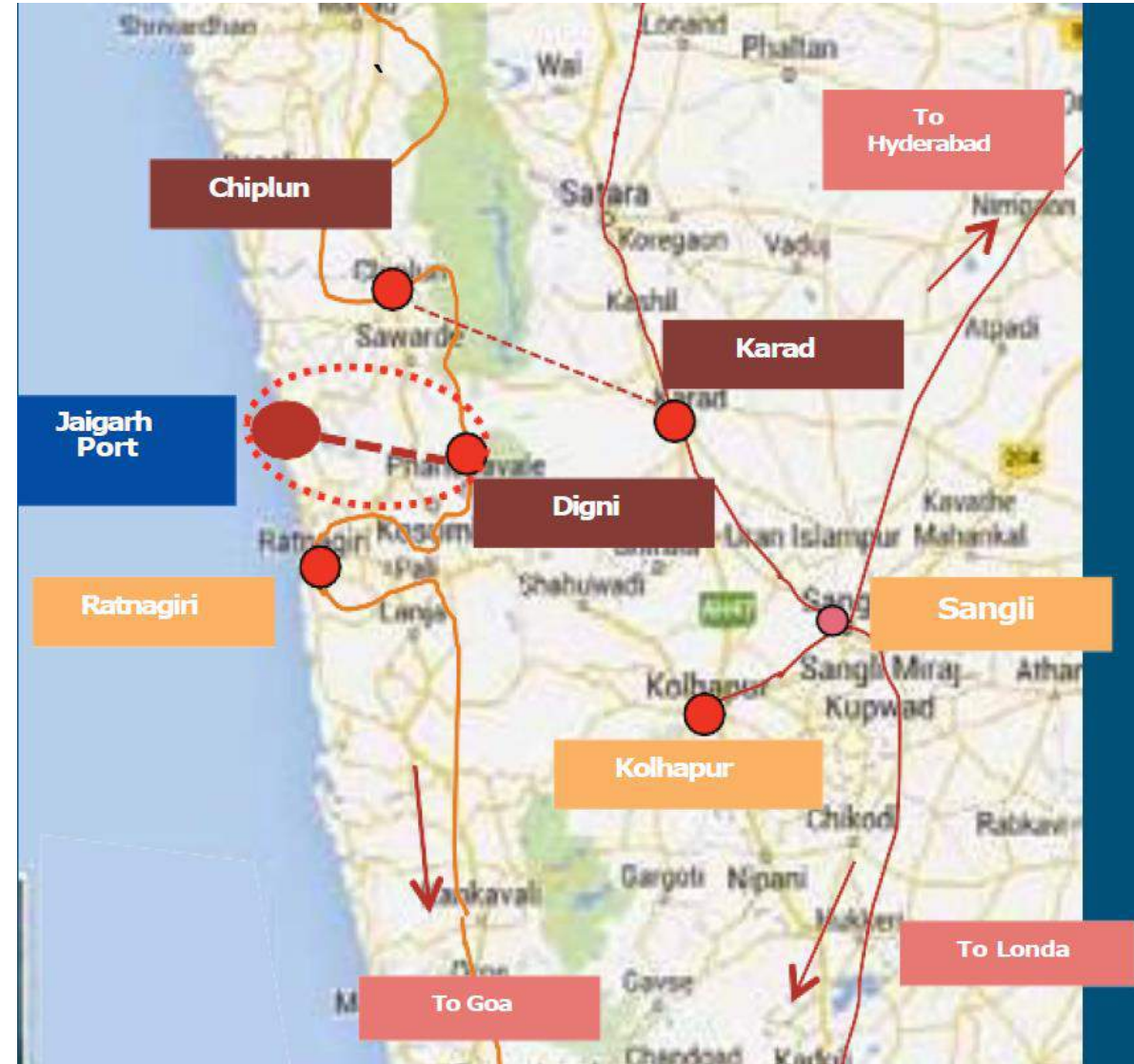
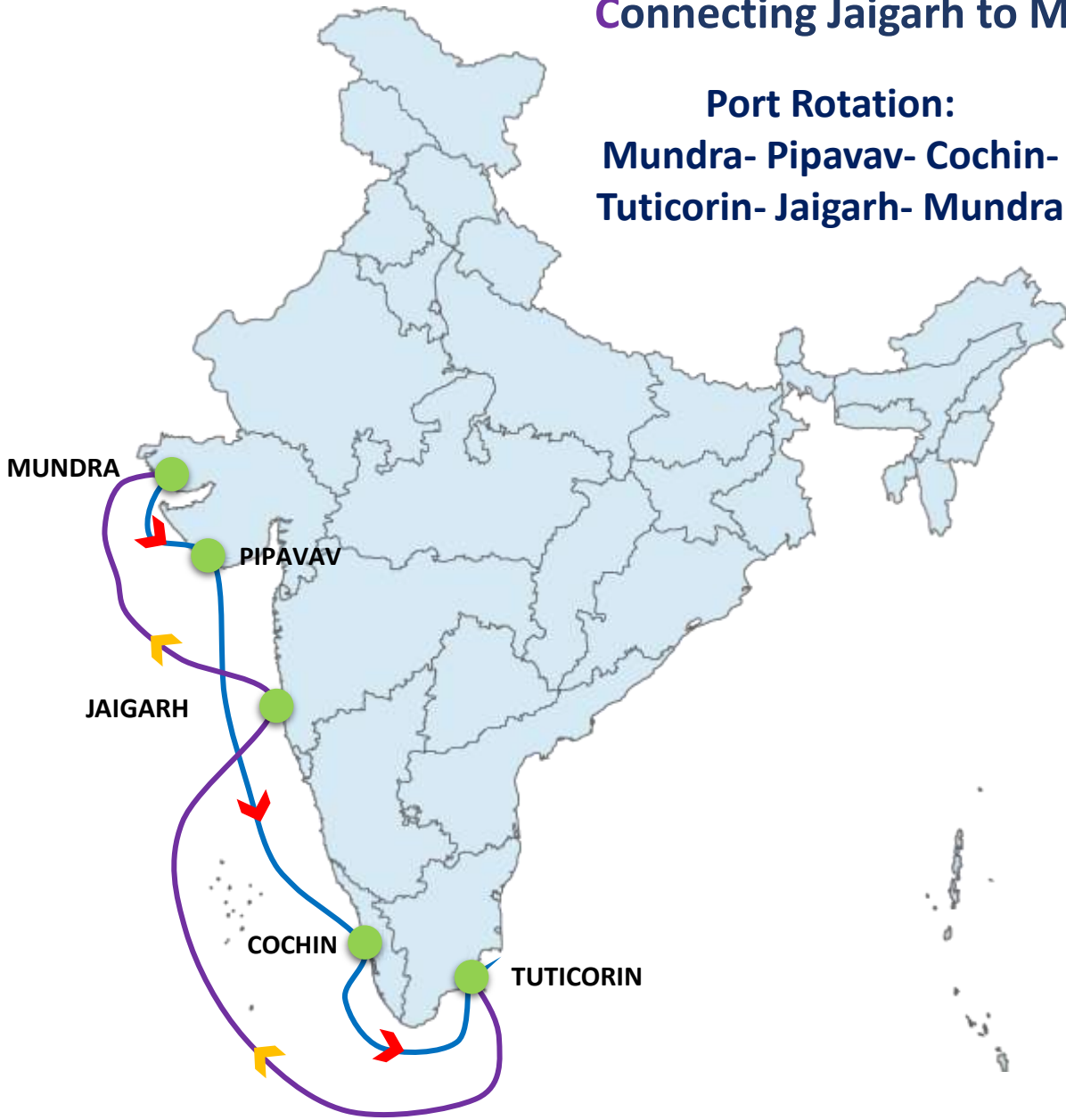


Distance to major Indian Cities			
City	Dist (km)	City	Dist (km)
Kolhapur	166	Ratnagiri	60
Sangli	214	Solapur	406
Satara	230	Raigarh	250
Pune	327	Aurangabad	559
Ahmednagar	446	Bijapur	340
Daund	383	Belgaum	279
Jalna	633	Bagalkot	365
parbhani	690	Dharwad	352

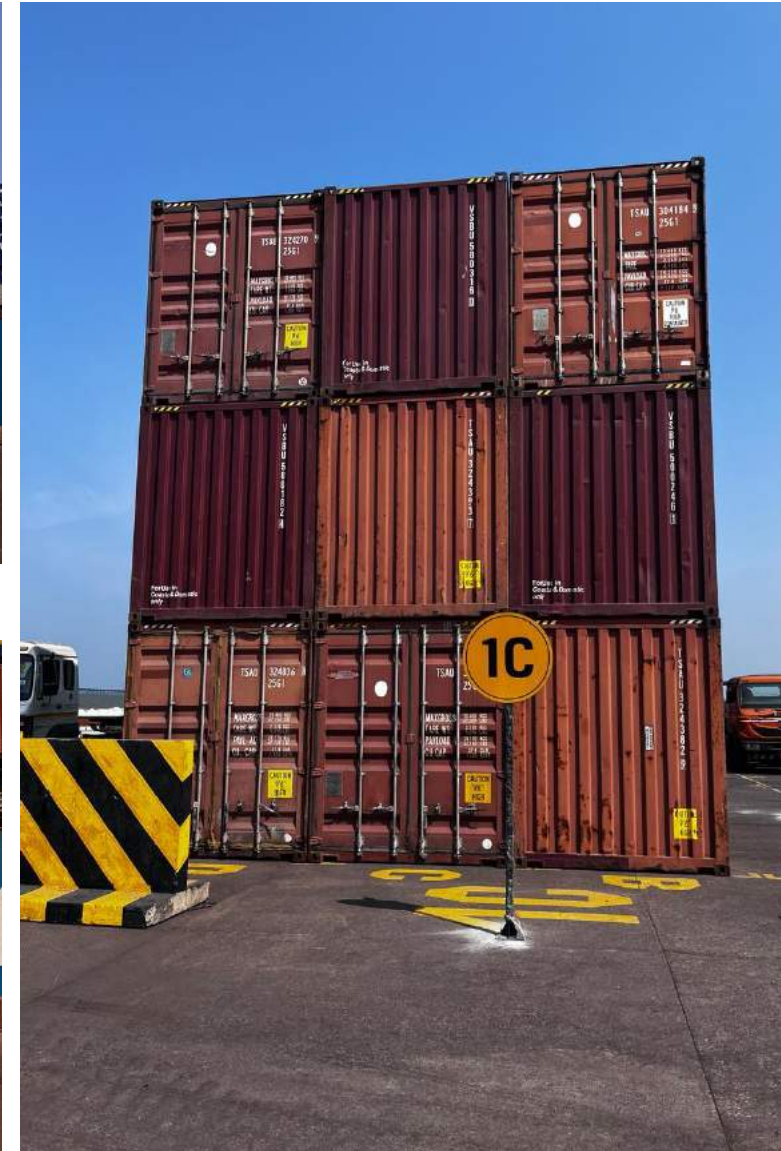
Commencement of Unifeeder Group Container line from Jaigarh

Connecting Jaigarh to Mundra, Gulf, Far East, China, East Africa and Red Sea

Port Rotation:
Mundra- Pipavav- Cochin-
Tuticorin- Jaigarh- Mundra



Commencement of Container line from Jaigarh





Thank You